



ASSEMBLE IN THE FOREST

14 JUNE - 14 JULY 2023



WEDNESDAY 14 JUNE OPENING NIGHT

6:00PM [BOOK NOW](#)
Forest of Imagination opens

PERFORMANCES

6:00PM
Slam Out Loud, film

6:20PM
Toby Thompson, spoken word

SPEECHES FROM 6:30PM
Professor Sue Rigby
Andrew Grant
Tom Boden
Margaret Heffernan

SHORT TALKS/PERFORMANCES

Morag Myerscough
Andrew Amondson
Martyn Ware & Oscar Blustin
Ian Forrester, BBC R&D,
and Kathy Hinde,
Rabbit Holes Collective

FROM 7:00PM
Patchlarks, Mysteries of the Mini-Forests

7:40PM
Canopy film

8:00PM
Forest of Imagination closes for the night

FOREST OF IMAGINATION IS FREE, AND WELCOMES ALL AGES

ARTISTS, ARTWORKS, INSTALLATIONS & WORKSHOPS

Please note, workshops are subject to change.

THURSDAY 15 JUNE 6-7PM ONLINE

George Monbiot in conversation with Andrew Grant, chaired by Dr. Penny Hay

[BOOK NOW](#)

FRIDAY 16 JUNE 10AM-4PM

DOCUMENTATION SPACE
Patchlarks, Mysteries of the Mini-Forests
A show about the wondrous worlds in a patch of moss.
PREBOOKED FOR SCHOOLS

11AM-12PM [BOOK NOW](#)
Holly Dabbs
EARLY YEARS FAMILY SESSION

11.30AM-12.30PM
Roundtable with Wera Hobhouse including lunch with Bath Community Kitchen

[BOOK NOW](#)

17 - 30 JUNE THE EGG

Family Portrait, Natasha Gilmore and her children
This stunning film is playing on a loop every 35mins, see website for days and times.

[SEE TIMES](#)

SOCIAL SHARING

Please share your photos using #PlayfulBath

- @forestofimagination
- Forest of Imagination
- @forestimaginatn



SATURDAY 17 JUNE 10AM-4PM

DOCUMENTATION SPACE
Patchlarks, Mysteries of the Mini-Forests
A show about the wondrous worlds in a patch of moss.
Check show times at the event.

[BOOK NOW](#)

12-3PM **IN THE GARDEN**
Bath Community Kitchen & FoodCycle
WORKSHOP

[BOOK NOW](#)

2-3PM **BALLROOM**
Hannah McDowell,
Canopy and family
STORYTELLING WORKSHOP

[BOOK NOW](#)

2-4PM **IN THE CITY**
Sam Furness,
Creative Quests

[BOOK NOW](#)



MONDAY 19 JUNE 4.30PM ONLINE

Noah Sobe, UNESCO

[BOOK NOW](#)

12-6PM **RSA HOUSE, LONDON**
Mya-Rose Craig at the RSA
Fellows Festival

[BOOK NOW](#)

10.30AM-12PM **IN THE CITY**
Bathscape, Leafy Legacies
URBAN TREESCAPE TRAILS

[BOOK NOW](#)

11AM-12.30PM (DROP IN)
BALLROOM
Kate Petty - Relaxed Musical Moments in the Forest

[BOOK NOW](#)

1.30-4PM **BALLROOM**
Kate Petty and Sarah Latto,
Finding your voice in the forest
OPEN WORKSHOP

[BOOK NOW](#)



WEDNESDAY 21 JUNE 6-7PM ONLINE

RSA Regenerative Design leads & Andrew Grant guests

[BOOK NOW](#)

11-12PM (DROP IN)
BALLROOM
Kate Petty - Relaxed Musical Moments in the Forest

[BOOK NOW](#)

11AM-12PM
Holly Dabbs
EARLY YEARS
FAMILY SESSION

[BOOK NOW](#)

11AM-12PM
Holly Dabbs
EARLY YEARS
FAMILY SESSION

[BOOK NOW](#)

THURSDAY 22 JUNE 6-7PM IRL

Rob Hopkins

[BOOK NOW](#)

11-12PM (DROP IN)
GARDEN WORKSHOP
Clare Day, Sitting Quietly With The Moon

[BOOK NOW](#)

2-4:30PM
Niki McCretton, Discovering Your Co-Creation Process
WORKSHOP

[BOOK NOW](#)

2-4:30PM
Niki McCretton, Discovering Your Co-Creation Process
WORKSHOP

[BOOK NOW](#)

11AM-12PM
Holly Dabbs
EARLY YEARS
FAMILY SESSION

[BOOK NOW](#)

THURSDAY 29 JUNE (5-6PM RSA BATH PRE-MEET) 6-7PM + RSA IRL

Margaret Heffernan and David Lambert

[BOOK NOW](#)

SATURDAY 1 JULY 12-3PM

Bath Community Kitchen & Bath Welcomes Refugees
Syrian Feast at the Forest

[BOOK NOW](#)

SAT/SUN 1-2 JULY 10.30AM-12.30PM + 1.30-3.30PM

DOCUMENTATION SPACE
Morgane Shaban and Holly Le Var - The Creatures of the Forest Assembling

[BOOK NOW](#)

TUESDAY 4 JULY 4-5.30PM IRL

The IMAGI-NATION troupe, human beings with story in their soul, and imagination in their heart

[BOOK NOW](#)

WEDNESDAY 5 JULY 6-7PM IRL

Alison Bellwood and the World's Largest Lesson team, Avon Schools Eco Network, Jane Davidson (Future Generations, Wales)
WORLD'S LARGEST LESSON

[BOOK NOW](#)

11AM-12PM
Holly Dabbs
EARLY YEARS
FAMILY SESSION

[BOOK NOW](#)

SEE PLAN OVERLEAF FOR LOCATIONS OF WORKSHOPS, ARTWORK AND INSTALLATIONS



Some events may have a different QR code.

KEY PARTNERS

House of Imagination
Grant Associates
Feilden Clegg Bradley Studios
Bath Spa University
Invisible Studio
Imagination
National Trust
Egg Theatre
RSA
Bathscape
Rainforest Concern

[CITY CENTRE MAP](#)

[SCAN OR CLICK TO ACCESS](#)

[BATHAMPTON MEADOWS MAP](#)



THURSDAY 6 JULY 1-2PM ONLINE

Bayo Akomolafe

[BOOK NOW](#)

4-5PM [BOOK NOW](#)
Dan Burgess
INTERACTIVE TALK

FRIDAY 7 JULY 11AM-12PM

Holly Dabbs
EARLY YEARS FAMILY SESSION

SATURDAY 8 JULY 12-3PM

Bath Community Kitchen collaboration with FoodCycle - turning waste food into a delicious free lunch for the good people of Bath

[BOOK NOW](#)

THURSDAY 6 JULY 1-2PM ONLINE

Bayo Akomolafe

[BOOK NOW](#)

4-5PM [BOOK NOW](#)
Dan Burgess
INTERACTIVE TALK

FRIDAY 7 JULY 11AM-12PM

Holly Dabbs
EARLY YEARS FAMILY SESSION

SATURDAY 8 JULY 12-3PM

Bath Community Kitchen collaboration with FoodCycle - turning waste food into a delicious free lunch for the good people of Bath

[BOOK NOW](#)

THURSDAY 6 JULY 1-2PM ONLINE

Bayo Akomolafe

[BOOK NOW](#)

4-5PM [BOOK NOW](#)
Dan Burgess
INTERACTIVE TALK

FRIDAY 7 JULY 11AM-12PM

Holly Dabbs
EARLY YEARS FAMILY SESSION

SATURDAY 8 JULY 12-3PM

Bath Community Kitchen collaboration with FoodCycle - turning waste food into a delicious free lunch for the good people of Bath

[BOOK NOW](#)

THURSDAY 6 JULY 1-2PM ONLINE

Bayo Akomolafe

[BOOK NOW](#)

4-5PM [BOOK NOW](#)
Dan Burgess
INTERACTIVE TALK

FRIDAY 7 JULY 11AM-12PM

Holly Dabbs
EARLY YEARS FAMILY SESSION

SATURDAY 8 JULY 12-3PM

Bath Community Kitchen collaboration with FoodCycle - turning waste food into a delicious free lunch for the good people of Bath

[BOOK NOW](#)



EVENT GUIDE

ASSEMBLE IN THE FOREST

14 JUNE - 14 JULY 2023

REGENERATION - GREEN & BLUE INFRASTRUCTURE
WILDLIFE CORRIDORS - FOOD & FUN

Transforming the areas in:
Bath Assembly Rooms, Bath BA1 2QH
Bartlett Street and beyond...

forestofimagination.org.uk

FREE
All ages welcome



Design by Imagination* | Location plans by Grant Associates. Cover illustration by Perry Harris.

v30

ASSEMBLE IN THE FOREST

The spectacular Bath Assembly Rooms will be the venue for the 2023 Forest of Imagination where we will celebrate 10 years as a contemporary arts event in Bath. For 2023, the National Trust invited Forest of Imagination to the Bath Assembly Rooms while the charity uncovers the history of the building, tests and finalises plans for the future and undertakes building work ahead of opening a Georgian experience in 2026.

OPENING TIMES

PUBLIC OPENING:
Fri, Sat, Sun, Mon: 10am-4pm

SCHOOLS:
Tues, Weds, Thurs: 10am-2pm

EVENINGS
RSA talks (young people/adults)
Weds, Thurs: 6-7pm



FREE
All ages welcome

'Assemble in the Forest' is an invitation to come together and celebrate the beauty and biodiversity of Bath and once again to showcase the imagination of our community. In addition, it provides an opportunity to shine a light on the importance of forests across the world and what they mean to us in Bath, especially in response to the climate emergency.

Forest of Imagination is a contemporary arts and design event created by Grant Associates, House of Imagination and local creative industries that reimagines a familiar space to inspire everyone's creativity and heighten a sense of nature in an urban environment.

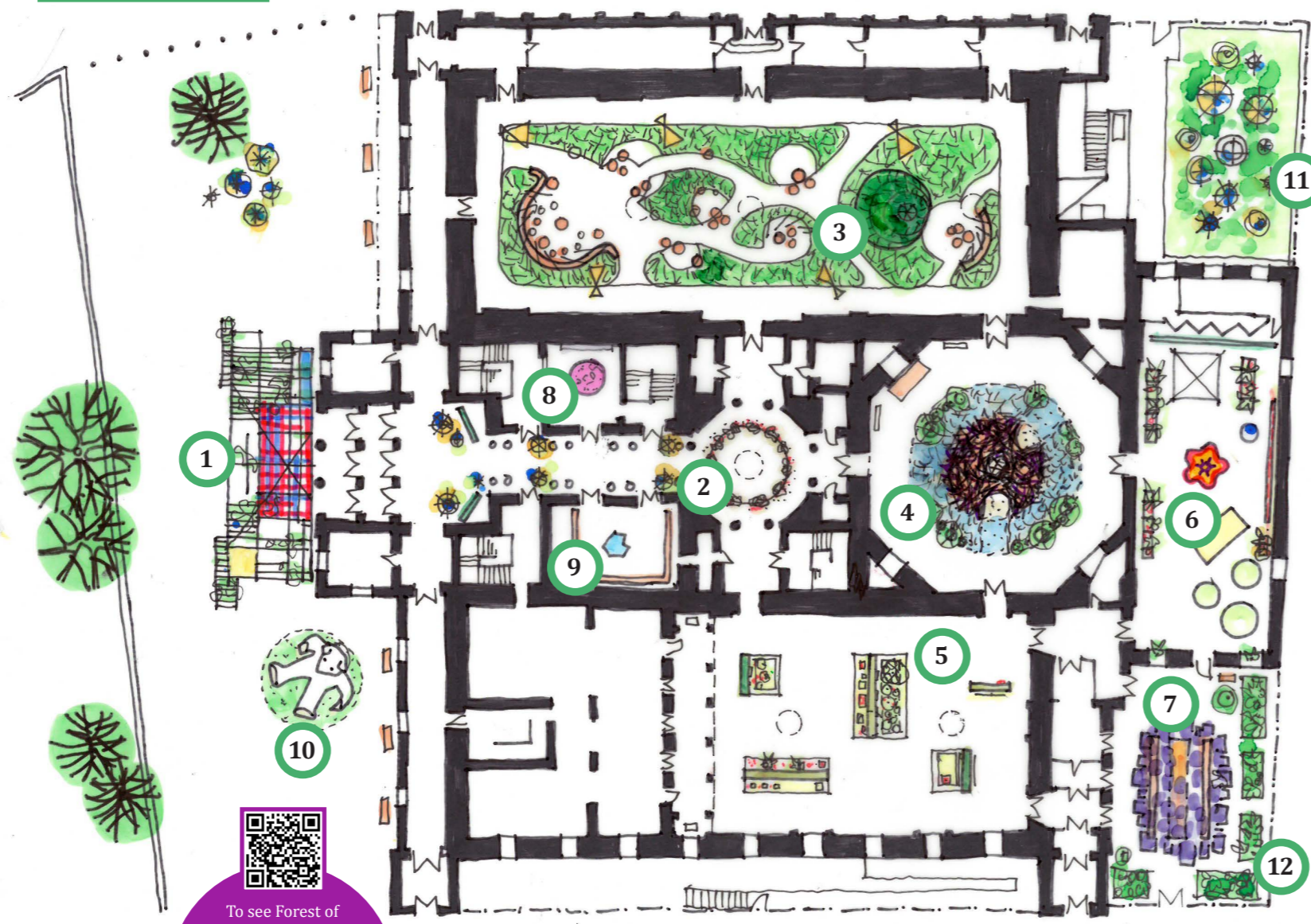
We are inspired by the opportunity to link art, nature, and the social life of the city into an experience that takes full advantage of the grand internal rooms and the distinctive outdoor spaces. All around the world people use forests as places to find respite, either individually or together.

Forest of Imagination is open to all and actively inclusive. We invite children, families and people of all ages to explore, make and learn in a creative, intuitive and imaginative way. This year Feilden Clegg Bradley Studios have created a pop-up House of Imagination as a creative making and performance space. Everyone is welcome, come along and play!

Andrew Grant (Grant Associates) and Dr. Penny Hay (House of Imagination and Bath Spa University)

LOCATION MAP

FOREST OF IMAGINATION 2023 • BATH ASSEMBLY ROOMS, BA1 2QH



To see Forest of Imagination continue to grow and return each year please donate by visiting localgiving.org/charity/HoI/project/FOI/

Thank you for your support

ACCESS INFORMATION

Level or ramped access to all installations. Accessible WC with left-hand transfer available, sorry no hoist or changing bed. Changeable sound and light levels throughout. Sorry no induction loop. Assistance dogs are welcome. More detailed information is available at www.nationaltrust.org.uk/bath-assembly-rooms



KEY

- Bird Song**
Morag Myerscough/
We Are The People
- Dark Forest**
Matt Leece
- Wandering Ways**
Andrew Amondson and
Feilden Clegg Bradley
Studios
- Beaver Den**
Grant Associates/Invisible
Studio/Charley Brentnall
- Tree Room**
Grant Associates, Bathscape,
National Trust and
Rainforest Concern
- Documentation Space**
House of Imagination/
Amy Corcoran/Emily Boxall
- Community Forest Shelter**
Invisible Studio/ Charley
Brentnall & Reading
University Students
- Sitting Quietly with the
Moon**
Clare Day
- Its Always Ourselves
We Find In The Sea**
Martyn Ware, Gabriel Ware,
Oscar Blustin and Anna
Söderblom
- Dreamer**
Grant Associates
- Extraordinary Forest**
House of Imagination and
local schools
- Bath Community Kitchen
Forest**
Bath Community Kitchen



If you were a tree what would you be?



forestofimagination.org.uk

PARTNERS, SPONSORS AND COLLABORATORS



DONATIONS FOREST OF IMAGINATION 2023

We receive much of our funding from generous people like you. By setting up a regular donation to House of Imagination you can support our long-term work to enhance wellbeing and transform lives, communities and cities.

Reliable income means we can plan our work more effectively helping us to achieve more.

Look out for this button on our website:

Support our long-term work
[Localgiving.com](https://localgiving.com)
Click to donate